



BIMBMS

House Configurator



To access the demo, an account *must* be requested at: <https://demo.bimkeeper.com>

The demo can be accessed at: <https://demo.bimkeeper.com/demos/home-configurator-demo>

This demo-instance is only intended for use with this particular demo. The focus of the demo is on this subject only. This means the navigation shows only what the user might need. Some features might not work for this reason. The first demo (basics) can be checked for a broader perspective of all the features BIMBMS offers. For more detailed information, the BIMBMS manual can be referenced, or IRP can be contacted at: contact@bimkeeper.com.



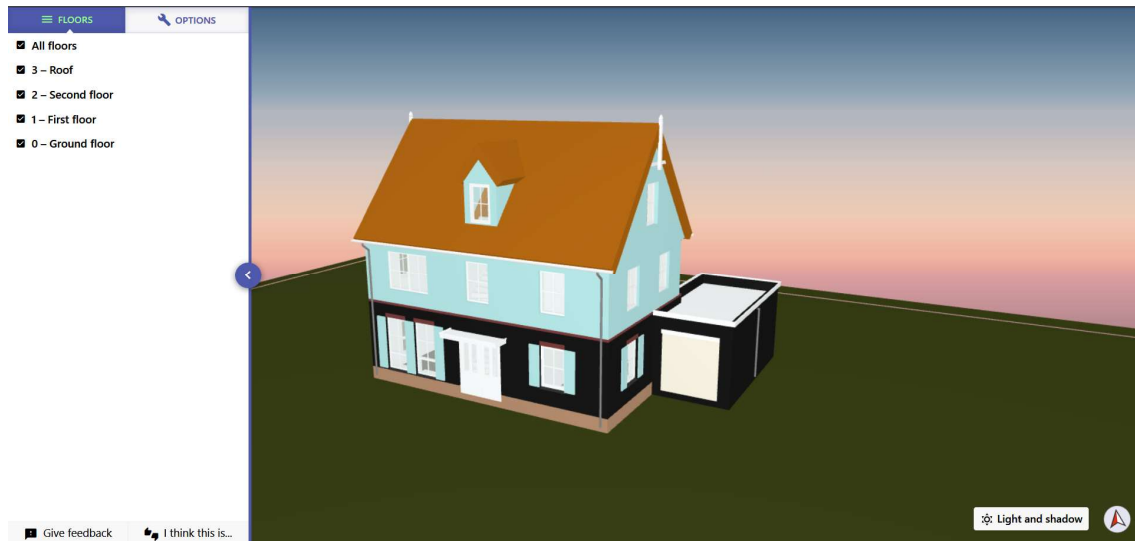
Contents

1	House Configurator.....	2
---	-------------------------	---



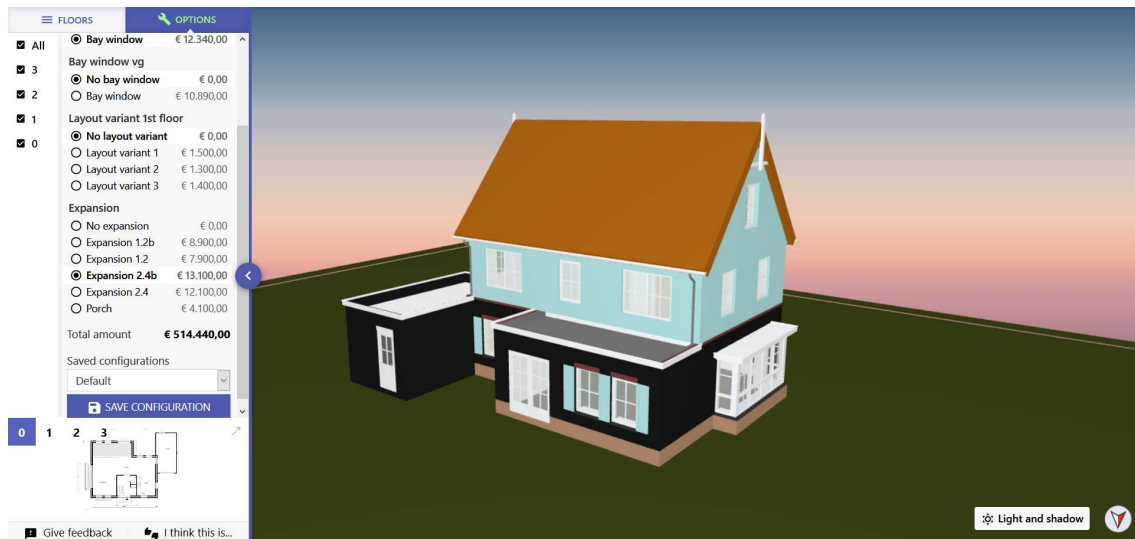
1 House Configurator

The house configurator allows potential buyers to configure their own home. This allows them to choose different options such as whether to install a dormer or porch, select a different interior layout, build expansions, etc. After creating a configuration, a floor plan can be downloaded and a price indication can be seen. Most importantly, changes in configuration are performed in real-time, both in 3D and 2D.



On the left sidebar there are 2 tabs. The Floors tab is used to select the floors that need to be seen.

On the options tab the available choices can be seen, together with the price per option and the total price of the current configuration. Clicking an option automatically updates the view and pricing.



Configurations can be saved to be later retrieved by clicking on “Save configuration”.



FLOORS **OPTIONS**

All

3

2

1

0

Dormer back side

No dormer back side € 0,00

Dormer 1.8m € 9.870,00

Bay window lg

No bay window € 0,00

Bay window € 12.340,00

Bay window vg

No bay window € 0,00

Bay window € 10.890,00

Layout variant 1st floor

No layout variant € 0,00

Layout variant 1 € 1.500,00

Layout variant 2 € 1.300,00

Layout variant 3 € 1.400,00

Expansion

No expansion € 0,00

Expansion 1.2b € 8.900,00

Expansion 1.2 € 7.900,00

Expansion 2.4b € 13.100,00

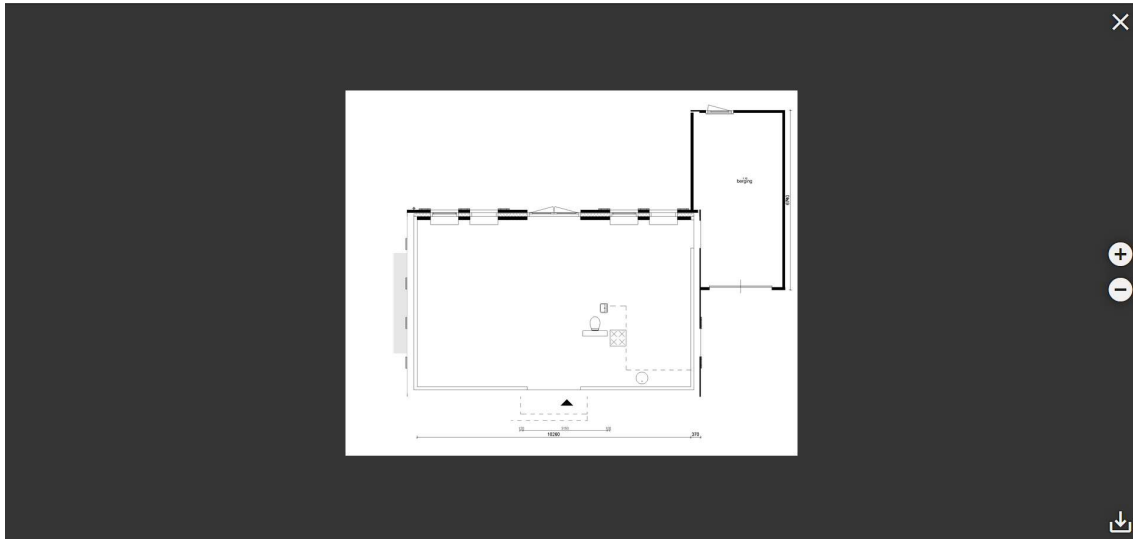
Expansion 2.4 € 12.100,00

Porch € 4.100,00

0 1 2 3

Give feedback **I think this is...**

Click on the numbers to switch the floor. To enlarge the floor plan view, click on the floor plan again. The floor plan is also updated in real time.



Note

The house configurator has been developed in a way that is scalable for a large number of configuration options. The number of possible configurations is quite large, and increases exponentially for each added option (in this case there are 192 configurations). BIMkeeper assembles the options dynamically, so it is not necessary to create new Revit/IFC model for each *possible* configuration.



End of manual

For other inquiries, please contact IRP at contact@irp.nl